

# WOOD FINISHES

FINISHES / **Transparent Wood Options;** Semi-Gloss Sheen



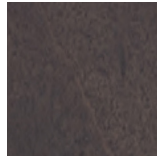
**Natural Maple**  
(11M)



**Neutral**  
(15M)



**Medium**  
(13M)



**Graphite**  
(25M)



**Transparent Black**  
(29M)



**White Wash II**  
(30M)

Please reference each product spec guide for available finishes and materials as not all options are available on all products.

Due to limitations of the color printing process these finish samples should be considered representative only.  
For larger finish samples, please contact Leland Customer Experience at (800) 859-7510.

# WOOD FINISHES

FINISHES / **Semi-Transparent Wood Options; Matte Sheen**



**Arctic II**  
(16M)



**Ink II**  
(18M)



**Limelight**  
(33M)



**Caribbean II**  
(48M)



**Soda Red**  
(46M)



**Tangerine**  
(40M)

---

## SOLIDS



**Dolphin II**  
(50M)

Please reference each product spec guide for available finishes and materials as not all options are available on all products.

Due to limitations of the color printing process these finish samples should be considered representative only.  
For larger finish samples, please contact Leland Customer Experience at (800) 859-7510.