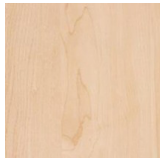


# Laminates

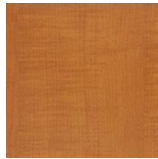
LELAND

Here is a wide selection of most commonly used laminates.

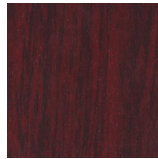
Don't see what you want? See side bar for more options from Formica, Wilsonart, and Pionite.



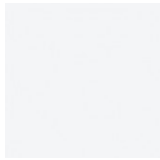
Kensington Maple  
Wilsonart®  
(10776-60)



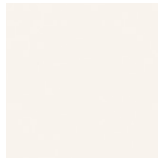
Huntington Maple  
Wilsonart®  
(7929-38)



Jewel Mahogany  
Pionite®  
(WY351)



Designer White  
Wilsonart®  
(D354-60)



Alabaster  
Wilsonart®  
(D431-60)



Desert Beige  
Formica®  
(899-58)



Platinum  
Wilsonart®  
(D315-60)



Citadel  
Formica®  
(1097-58)



Slate Grey  
Wilsonart®  
(D91-60)



Black  
Pionite®  
(SE101)



Shadow Zephyr  
Wilsonart®  
(4857-60)



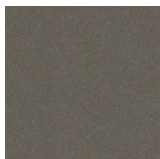
Desert Zephyr  
Wilsonart®  
(4841-60)



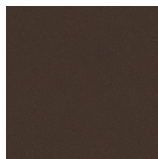
Canyon Zephyr  
Wilsonart®  
(4842-60)



Misted Zephyr  
Wilsonart®  
(4843-60)



Twilight Zephyr  
Wilsonart®  
(4845-60)



Morro Zephyr  
Wilsonart®  
(4846-60)

## ADDITIONAL STANDARD LAMINATES:

Select from the code list below.

Should your project require a laminate code or supplier not on this list, please contact the Leland Customer Experience Department for assistance to select alternate laminates.

## FORMICA® [VIEW HERE](#)

Standard finish

-58 (matte finish) -43 (artisan)

Standard thickness

Grade 12, .035"

Standard selections

Color Portfolio, patterns, wood grains

(with exceptions) (10 grade can be ordered special, 20 grade is available in limited colors)

## WILSONART® [VIEW HERE](#)

Standard finish

-60 (matte) -38 (fine velvet texture)

Standard thickness

350.40 General Purpose, .050"

Standard selections

solids, patterns and woodgrains  
(with exceptions)

## PIONITE® [VIEW HERE](#)

Standard finish

SD (suede)

Standard thickness

G48 General Purpose, .048"

Standard selections

solids, patterns, stones, woodgrains  
(with exceptions)

Leland tables may be ordered with any laminate recommended for application on horizontal surfaces. For table pricing and lead times using laminates not listed above or laminates from Laminart and Abet Laminati, please contact Leland's Customer Service Department.

Please reference each product spec guide for available finishes and materials as not all options are available on all products. Due to limitations of the color printing process these finish samples should be considered representative only.

For larger finish samples, please contact Leland Customer Experience at (800) 859-7510.