

---

LELAND

# Little Marquette

Specifications  
& Finishes



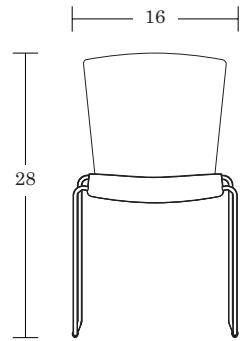
February 2023

# Little Marquette

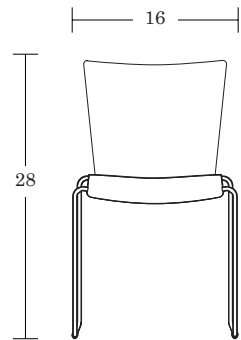
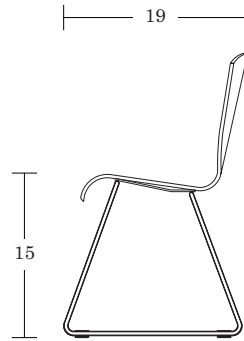
Children's Chair

LELAND

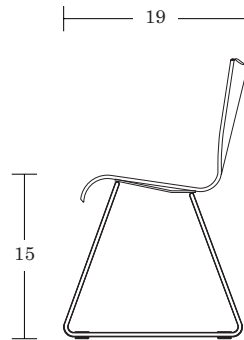
## SPECIFICATIONS



Arc / MQL-A



Crescent / MQL-C



### Veneer Options

Leland Wood Finishes [View transparent](#) / [View semi-transparent](#)

### Back Options [View here](#)

Arc or Crescent Shell Style  
16 Cutouts  
Plain Back  
Custom Cutouts/Engravings

### Base Finish Options [View here](#)

Black Powder Coat  
Sterling Power Coat

### Glide Options

Standard (polycarbonate)  
Felt

### Features

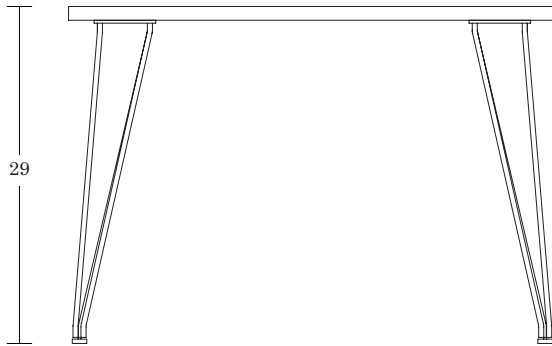
Stacks 5 high on floor

# Little Marquette

Children's Table

LELAND

## SPECIFICATIONS



Four Leg, Sterlingd Base/ MLF-ST

### Top Surface Options

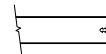
Leland Wood Finishes [View transparent](#) / [View semi-transparent](#)

Laminate - Standards from Formica®, Wilsonart®, Pionite®, Nevamar® [view here](#)

Solid Surface

### Edge Options [View here](#)

Vinyl Edge



2 Wood Edges



### Base Options [View here](#)

Black Powder Coat

Sterling Power Coat

### Glide Options

Standard (Black nylon adjustable leveling)

Chrome adjustable leveling (Standard on Chrome base only)

### Top Size Options



Circle

36 Dia

42 Dia

48 Dia



Square

36 x 36

42 x 42

48 x 48



Rectangle

30 x 60

# Little Marquette

Transparent Wood Options

LELAND



Natural  
(11M)



Neutral  
(15M)



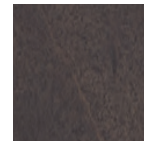
Medium  
(13M)



White Wash II  
(30M)



Transparent  
Black  
(29M)



Graphite  
(25M)

Quick Links /  
[View Chair](#)  
[View Table](#)

Due to limitations of the color printing process these finish samples should be considered representative only. For larger finish samples, please contact Leland Customer Experience at (800) 859-7510.

# Little Marquette

Semi-Transparent Wood Options; *Matte Sheen*

LELAND



Arctic II  
(16M)



Ink II  
(18M)



Limelight  
(33M)



Caribbean II  
(48M)



Soda Red  
(46M)



Tangerine  
(40M)

## SOLIDS



Dolphin II  
(50M)

Quick Links /  
[View Chair](#)  
[View Table](#)

Due to limitations of the color printing process these finish samples should be considered representative only. For larger finish samples, please contact Leland Customer Experience at (800) 859-7510.

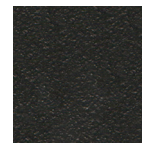
# Little Marquette

Powder Coat

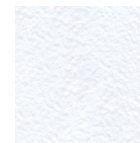
LELAND



Sterling  
(ST)



Black Textured  
(BT)



White Textured  
(WT)



Soda Red  
Textured  
(SRT)



Dolphin Textured  
(DLT)



Tangerine  
Textured  
(TNT)



Arctic Textured  
(ART)



Caribbean  
Textured  
(CBT)



Limelight  
Textured  
(LLT)



Ink Textured  
(INT)

Quick Links /  
[View Chair](#)  
[View Table](#)

Due to limitations of the color printing process these finish samples should be considered representative only. For larger finish samples, please contact Leland Customer Experience at (800) 859-7510.

# Little Marquette





ART OPTIONS Back & Shell





LELAND











Arc cutout / CODE: A

Crescent cutout / CODE: C

SWAMP THINGS SERIES		
		CODE
Lizard		1S
Tree Frog	*cutout is off center 	2S
Turtle	*cutout is off center 	3S
Snake		4S

PETROGLYPH SERIES		
		CODE
Deer		1P
Antelope		2P
Ram		3P
Horse		4P

GEOMETRIC SERIES		
		CODE
Shapes		1G
Circle		2G
Square		3G
Triangle		4G

CELEESTIAL SERIES		
		CODE
Saturn		1C
Shooting Star		2C
Starry Night		3C
Moon		4C

Custom Cutouts/Engravings also available.

Quick Links /  
[View Chair](#)  
[View Table](#)

# Little Marquette

LELAND

## Table Top

To simplify your selection, the following laminates are pre-approved standards.

Don't see what you want? [Click here for all available laminates](#)



Quick Links /  
[View Chair](#)  
[View Table](#)

Quick Links / [Order Wilsonart](#)  
Quick Links / [Order Pionite](#)  
Quick Links / [Order Formica](#)



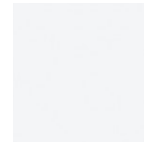
Kensington Maple  
Wilsonart®  
(10776-60)



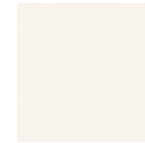
Huntington Maple  
Wilsonart®  
(7929-38)



Jewel Mahogany  
Pionite®  
(WY351)



Designer White  
Wilsonart®  
(D354-60)



Alabaster  
Wilsonart®  
(D431-60)



Desert Beige  
Formica®  
(899-58)



Platinum  
Wilsonart®  
(D315-60)



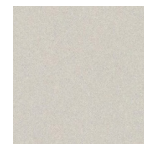
Citadel  
Formica®  
(1097-58)



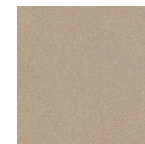
Slate Grey  
Wilsonart®  
(D91-60)



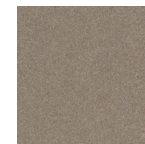
Black  
Pionite®  
(SE101)



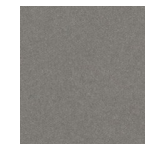
Shadow Zephyr  
Wilsonart®  
(4857-60)



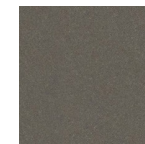
Desert Zephyr  
Wilsonart®  
(4841-60)



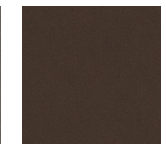
Canyon Zephyr  
Wilsonart®  
(4842-60)



Misted Zephyr  
Wilsonart®  
(4843-60)



Twilight Zephyr  
Wilsonart®  
(4845-60)



Morro Zephyr  
Wilsonart®  
(4846-60)

Due to limitations of the color printing process these finish samples should be considered representative only. For larger finish samples, please contact Leland Customer Experience at (800) 859-7510.

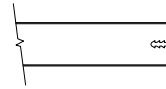


# Little Marquette

LELAND

Table Edges

## TABLE EDGE DETAIL



(13/ 16" flat PVC)



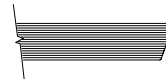
White  
(W)

Grey  
(G)

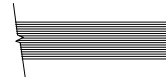
Black  
(B)



## TABLE EDGE DETAIL



(1" beveled plywood)



(1" flat plywood)

## AVAILABLE WOOD FINISHES

[View transparent/View semi-transparent](#)

Quick Links /  
[View Chair](#)  
[View Table](#)

Due to limitations of the color printing process these finish samples should be considered representative only. For larger finish samples, please contact Leland Customer Experience at (800) 859-7510.

---

# LELAND

**5695 Eagle Drive, SE**  
**Grand Rapids,**  
**Michigan 49512**  
**616-975-9260**  
**[lelandfurniture.com](http://lelandfurniture.com)**