

# SCS COMPLIANT WOOD FINISHES

SCS Certified products specified with wood finishes must use one of the following compliant wood finishes.  
Finish code EM designates a Matte 10 sheen top coat.  
Not all finish options are available on all products.  
\$10 Net upcharge per item.

## FINISHES / Transparent Wood Options



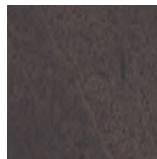
**Natural Maple**  
(11EM)



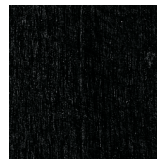
**Neutral**  
(15EM)



**Medium**  
(13EM)



**Graphite**  
(25EM)



**Transparent Black**  
(29EM)



**White Wash II**  
(30EM)

## FINISHES / Semi-Transparent Wood Options



**Arctic II**  
(16EM)



**Ink II**  
(18EM)



**Limelight**  
(33EM)



**Caribbean II**  
(48EM)



**Soda Red**  
(46EM)



**Tangerine**  
(40EM)

# SCS COMPLIANT WOOD FINISHES

SCS Certified products specified with wood finishes must use one of the following compliant wood finishes.

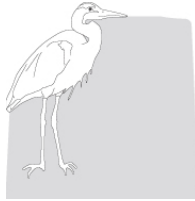
Not all finish options are available on all products.  
\$10 Net upcharge per item.


FINISHES / **Eve Creatures; Semi-Gloss Sheen**

## wetland creatures




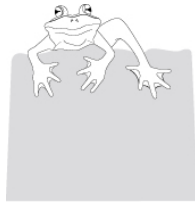
 **Beaver (P001)**  
Medium (13E)



 **Heron (P002)**  
Aegean (78E)



 **Trout (P006)**  
Cactus (82E)

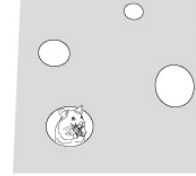


 **Frog (P004)**  
Sea grass (79E)

## woodland creatures



 **Bear (P007)**  
Medium Cherry (17E)



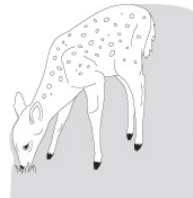
 **Mouse (P008)**  
Aegean (78E)




 **Fox (P009)**  
Scarlet (83E)



 **Raccoon (P010)**  
Nocturne (81E)



 **Deer (P012)**  
Terra (84E)